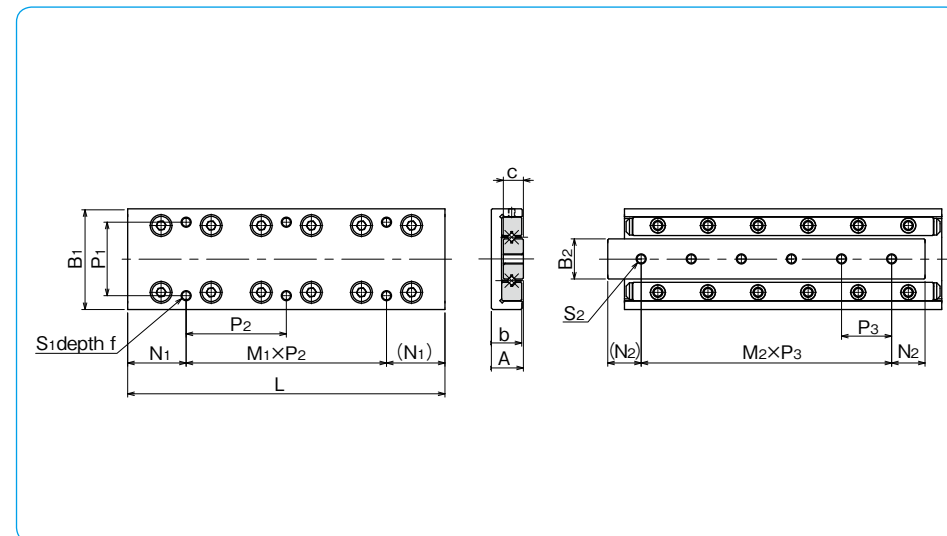
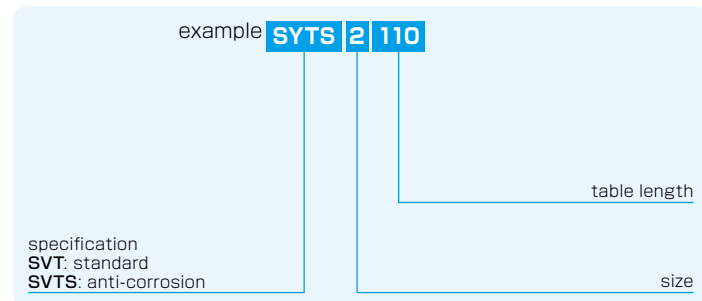


# SYT TYPE

-SYT1/SYT2-



## part number structure

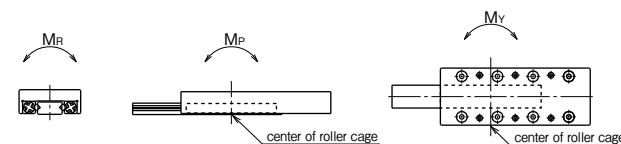


part number		stroke ST mm	major dimensions						table-top mounting hole dimensions		
standard	anti-corrosion		A mm	B <sub>1</sub> mm	L mm	b mm	B <sub>2</sub> mm	c mm	P <sub>1</sub> mm	S <sub>1</sub>	f mm
<b>SYT 1025</b>	<b>SYTS 1025</b>	12	8±0.1	20±0.1	25	7.5	6.6	4	14	M2.6	3
<b>1035</b>	<b>1035</b>	18			35						
<b>1045</b>	<b>1045</b>	25			45						
<b>1055</b>	<b>1055</b>	32			55						
<b>1065</b>	<b>1065</b>	40			65						
<b>1075</b>	<b>1075</b>	45			75						
<b>1085</b>	<b>1085</b>	50			85						
<b>SYT 2035</b>	<b>SYTS 2035</b>	18	12±0.1	30±0.1	35	11.5	12	6	22	M3	5
<b>2050</b>	<b>2050</b>	30			50						
<b>2065</b>	<b>2065</b>	40			65						
<b>2080</b>	<b>2080</b>	50			80						
<b>2095</b>	<b>2095</b>	60			95						
<b>2110</b>	<b>2110</b>	70			110						
<b>2125</b>	<b>2125</b>	80			125						

N <sub>1</sub> mm	M <sub>1</sub> ×P <sub>2</sub> mm	bed-surface mounting hole dimensions		accuracy ※(deviation)		basic load rating		allowable load F N	allowable static moment			mass g	size	
		S <sub>2</sub>	N <sub>2</sub> mm	M <sub>2</sub> ×P <sub>3</sub> mm	T μm	S μm	dynamic C N		static Co N	M <sub>P</sub> N·m	M <sub>Y</sub> N·m			M <sub>R</sub> N·m
3.5	1×18	M2.6	5	2×7.5	2	4	464	476	158	1.79	1.47	1.79	22	<b>1025</b>
3.5	1×28		7.5	2×10	2	4	805	952	316	3.08	3.50	3.58	33	<b>1035</b>
12.5	1×20		7.5	3×10	2	5	959	1,190	396	6.98	6.40	4.48	42	<b>1045</b>
12.5	1×30		7.5	4×10	2	5	1,100	1,420	475	9.53	8.81	5.37	52	<b>1055</b>
12.5	2×20		7.5	5×10	2	5	1,240	1,660	554	12.4	11.6	6.27	63	<b>1065</b>
22.5	1×30		7.5	6×10	2	5	1,510	2,140	712	19.3	18.3	8.06	72	<b>1075</b>
12.5	2×30		7.5	7×10	2	5	1,650	2,380	792	23.4	22.3	8.96	83	<b>1085</b>
3.5	1×28	M3	7.5	1×20	2	4	1,090	1,170	390	7.04	5.78	7.63	79	<b>2035</b>
3.5	1×43		10	2×15	2	4	1,510	1,750	585	12.1	10.7	11.4	113	<b>2050</b>
17.5	1×30		10	3×15	2	5	1,900	2,340	780	19.1	17.1	15.2	150	<b>2065</b>
17.5	1×45		10	4×15	2	5	2,620	3,510	1,170	27.4	29.6	22.8	185	<b>2080</b>
17.5	2×30		10	5×15	2	5	2,950	4,100	1,360	37.4	39.9	26.7	215	<b>2095</b>
32.5	1×45		10	6×15	2	5	3,280	4,680	1,560	61.7	58.1	30.5	255	<b>2110</b>
17.5	2×45		10	7×15	2	5	3,590	5,270	1,750	76.1	72.1	34.3	295	<b>2125</b>

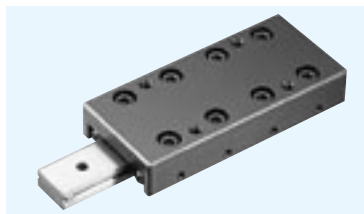
※For accuracy (T, S), refer to Figure G-18 (page G-25).

1N≒0.102kgf 1N·m≒0.102kgf·m

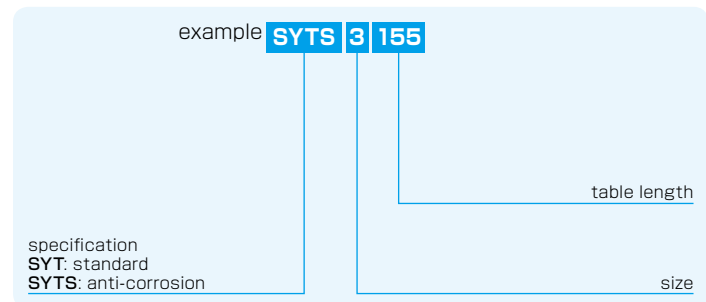


# SYT TYPE

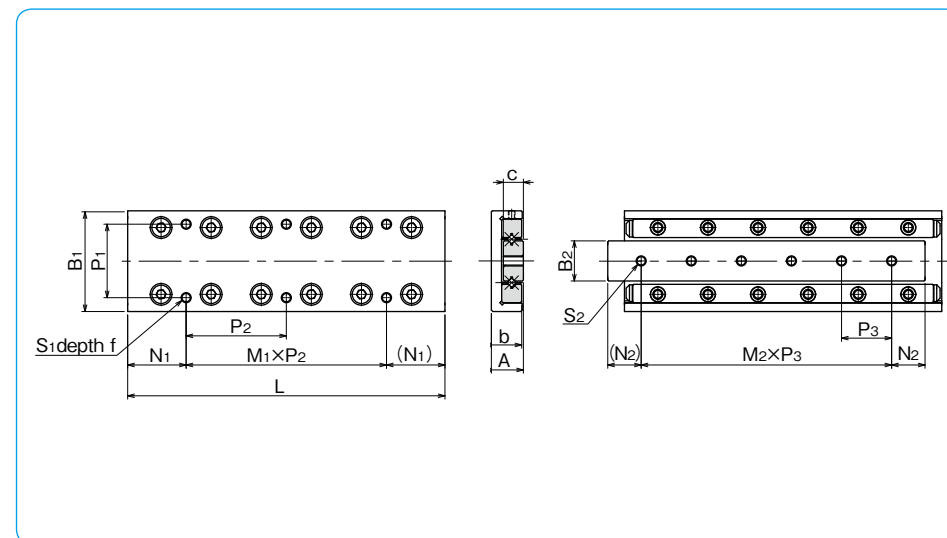
-SYT3-



## part number structure



part number		stroke ST mm	major dimensions						table-top mounting hole dimensions		
standard	anti-corrosion		A mm	B <sub>1</sub> mm	L mm	b mm	B <sub>2</sub> mm	c mm	P <sub>1</sub> mm	S <sub>1</sub>	f mm
<b>SYT 3055</b>	<b>SYTS 3055</b>	30	16±0.1	40±0.1	55	15.5	16	8	30	M4	7
<b>3080</b>	<b>3080</b>	45			80						
<b>3105</b>	<b>3105</b>	60			105						
<b>3130</b>	<b>3130</b>	75			130						
<b>3155</b>	<b>3155</b>	90			155						
<b>3180</b>	<b>3180</b>	105			180						
<b>3205</b>	<b>3205</b>	130			205						



N <sub>1</sub> mm		M <sub>1</sub> × P <sub>2</sub> mm		bed-surface mounting hole dimensions		accuracy ※(deviation)		basic load rating		allowable load	allowable static moment			mass	size
N <sub>1</sub>	M <sub>1</sub> × P <sub>2</sub>	S <sub>2</sub>	N <sub>2</sub>	M <sub>2</sub> × P <sub>3</sub>	T μm	S μm	dynamic C N	static Co N	F N	M <sub>P</sub> N · m	M <sub>Y</sub> N · m	M <sub>R</sub> N · m	g		
7.5	1 × 40	M4	10	1 × 35	2	5	3,490	3,890	1,290	19.4	22.2	33.8	225	<b>3055</b>	
7.5	1 × 65		15	2 × 25	2	5	5,230	6,490	2,160	53.0	58.0	56.4	340	<b>3080</b>	
27.5	1 × 50		15	3 × 25	3	5	6,030	7,790	2,590	103	95.7	67.7	440	<b>3105</b>	
27.5	1 × 75		15	4 × 25	3	5	7,560	10,300	3,450	170	160	90.3	560	<b>3130</b>	
27.5	2 × 50		15	5 × 25	3	5	9,000	12,900	4,320	210	220	112	655	<b>3155</b>	
52.5	1 × 75		15	6 × 25	3	5	10,300	15,500	5,180	302	314	135	770	<b>3180</b>	
27.5	2 × 75		15	7 × 25	3	5	11,000	16,800	5,610	355	367	146	880	<b>3205</b>	

※For accuracy (T, S), refer to Figure G-18 (page G-25).

1N ≒ 0.102kgf 1N · m ≒ 0.102kgf · m

