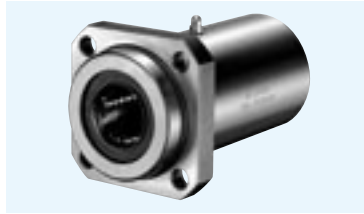


TQK-W-E TYPE

— Square Flange Double-Wide Pilot End Type —



part number structure

example **TQK25GWUU-E-SK**

TQK type	inner contact diameter (dr)	resin retainer	double-wide type	seal	with pilot end	outer cylinder surface treatment
				UU: seals on both sides		blank: no surface treatment
				ZZ: doublelip-seals on both sides		SK: electroless nickel plating
						LF: low temperature black chrome treatment with fluoride coating
						SB: black oxide
						SC: industrial chrome plating

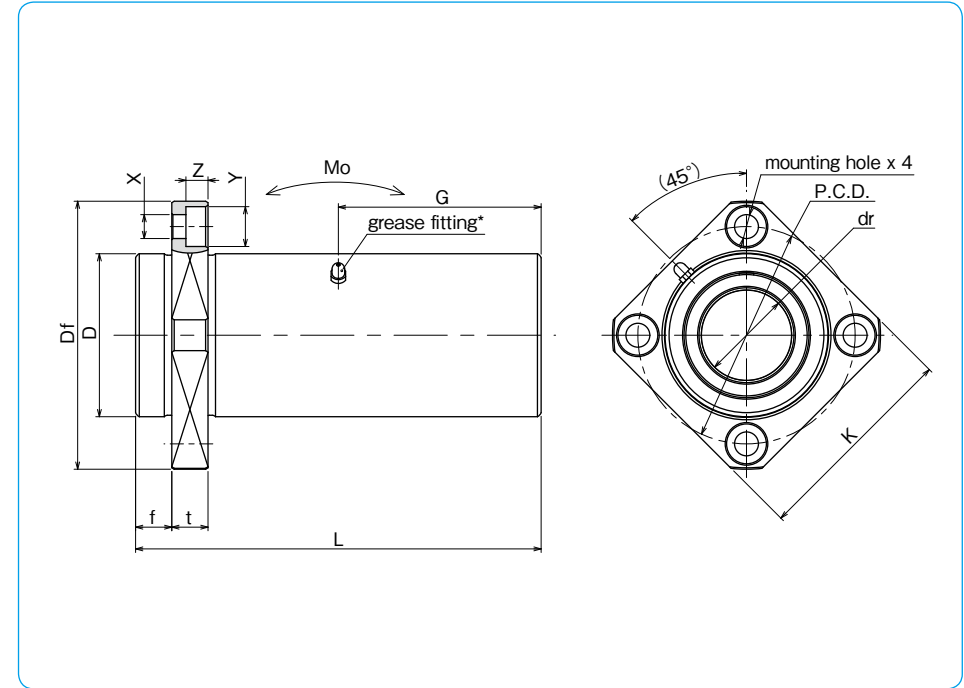
Doublelip-seal is available for size 6 to 30.

part number*	number of ball circuits	dr		D		major dimensions					
		mm	tolerance μm	mm	tolerance μm	L ± 0.3 mm	f mm	Df mm	K mm	t mm	flange P.C.D. mm
TQK16GUUW-E	4	16	0/-10	32	0	70	8	54	42	8	43
TQK20GUUW-E	5	20	0	40	-19	80	8	62	50	8	51
TQK25GUUW-E	6	25	-12	45	0	112	10	74	58	10	60
TQK30GUUW-E	6	30	0	52	-22	123	10	82	64	10	67
TQK35GUUW-E	6	35	0	60	0	135	13	96	75	13	78
TQK40GUUW-E	6	40	-15	65	0	151	13	101	80	13	83

* Seals-on-both-sides is standard.

**TQK16G~25G : M3-1 grease fitting TQK30G~40G : A-M6x1

Surface treatment is optional.



X×Y×Z mm	grease fitting G mm	eccentricity μm	perpendicularity μm	basic load rating		allowable static moment Mo N·m	shaft diameter mm
				dynamic C N	static Co N		
5.5×9×5.1	35	15	15	1,230	2,350	19.7	16
5.5×9×5.1	40	20	20	1,400	2,740	26.8	20
6.6×11×6.1	56			1,560	3,140	43.4	25
6.6×11×6.1	61.5	25	25	2,490	5,490	82.8	30
9×14×8.1	67.5			2,650	6,270	110	35
9×14×8.1	75.5			3,430	8,040	147	40

1N \approx 0.102kgf 1N·m \approx 0.102kgf·m