

# SMK-W TYPE

– Square Flange Double-Wide Type –

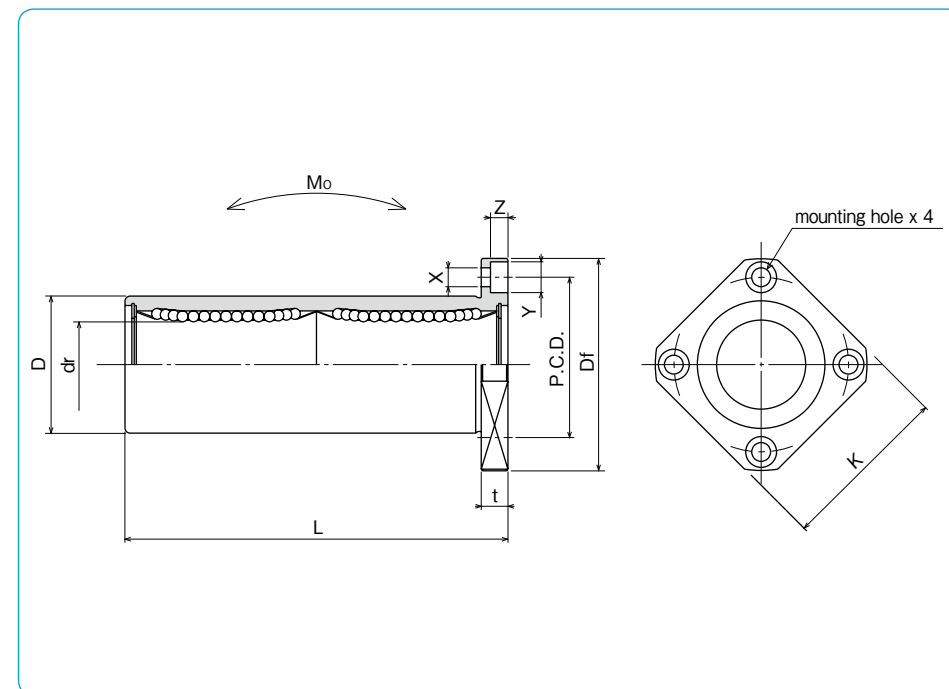


## part number structure

example **SMSK 25 G W UU -SK**

specification <b>SMK</b> : standard <b>SMSK</b> : anti-corrosion	outer cylinder surface treatment <b>blank</b> : no surface treatment <b>SK</b> : electroless nickel plating <b>LF</b> : low temperature black chrome treatment with fluoride coating <b>SB</b> : black oxide (not available on anti-corrosion type) <b>SC</b> : industrial chrome plating
inner contact diameter (dr)	seal <b>blank</b> : without seal <b>UU</b> : seals on both sides <b>ZZ</b> : doublelip-seals on both sides
retainer material <b>blank</b> : standard/steel anti-corrosion/stainless steel <b>G</b> : resin	double-wide type

Doublelip-seal is available for size 6 to 30.



part number				number of ball circuits	major dimensions		
standard steel retainer	anti-corrosion resin retainer	stainless steel retainer	resin retainer		dr (mm)	D (mm)	L (mm)
SMK 6W	SMK 6GW	SMSK 6W	SMSK 6GW	4	6	12	35
SMK 8W	SMK 8GW	SMSK 8W	SMSK 8GW	4	8	15	45
SMK 10W	SMK 10GW	SMSK 10W	SMSK 10GW	4	10	19	55
SMK 12W	SMK 12GW	SMSK 12W	SMSK 12GW	4	12	21	57
SMK 13W	SMK 13GW	SMSK 13W	SMSK 13GW	4	13	23	61
SMK 16W	SMK 16GW	SMSK 16W	SMSK 16GW	4	16	28	70
SMK 20W	SMK 20GW	SMSK 20W	SMSK 20GW	5	20	32	80
SMK 25W	SMK 25GW	SMSK 25W	SMSK 25GW	6	25	40	112
SMK 30W	SMK 30GW	SMSK 30W	SMSK 30GW	6	30	45	123
SMK 35W	SMK 35GW	SMSK 35W	SMSK 35GW	6	35	52	135
SMK 40W	SMK 40GW	SMSK 40W	SMSK 40GW	6	40	60	151
SMK 50W	SMK 50GW	SMSK 50W	SMSK 50GW	6	50	80	192
SMK 60W	SMK 60GW	SMSK 60W	SMSK 60GW	6	60	90	209

Df (mm)	K (mm)	flange		X×Y×Z (mm)	eccentricity (μm)	perpendicularity (μm)	basic load rating		allowable static moment Mo (N·m)	mass (g)	shaft diameter (mm)
		t (mm)	P.C.D. (mm)				dynamic C (N)	static Co (N)			
28	22	5	20	3.5×6×3.1	15	15	323	530	2.18	25	6
32	25	5	24	3.5×6×3.1			431	784	4.31	43	8
40	30	6	29	4.5×7.5×4.1			588	1,100	7.24	78	10
42	32	6	32	4.5×7.5×4.1			813	1,570	10.9	90	12
43	34	6	33	4.5×7.5×4.1			813	1,570	11.6	108	13
48	37	6	38	4.5×7.5×4.1			1,230	2,350	19.7	165	16
54	42	8	43	5.5×9×5.1	20	20	1,400	2,740	26.8	225	20
62	50	8	51	5.5×9×5.1			1,560	3,140	43.4	500	25
74	58	10	60	6.6×11×6.1			2,490	5,490	82.8	590	30
82	64	10	67	6.6×11×6.1			2,650	6,270	110	930	35
96	75	13	78	9×14×8.1	25	25	3,430	8,040	147	1,380	40
116	92	13	98	9×14×8.1			6,080	15,900	397	3,400	50
134	106	18	112	11×17×11.1			7,550	20,000	530	4,060	60

1N≒0.102kgf 1N·m≒0.102kgf·m