

SMF TYPE

– Round Flange Type –



part number structure

example **SMSF 25 G UU-SK**

specification
SMF: standard
SMSF: anti-corrosion

inner contact diameter (dr)

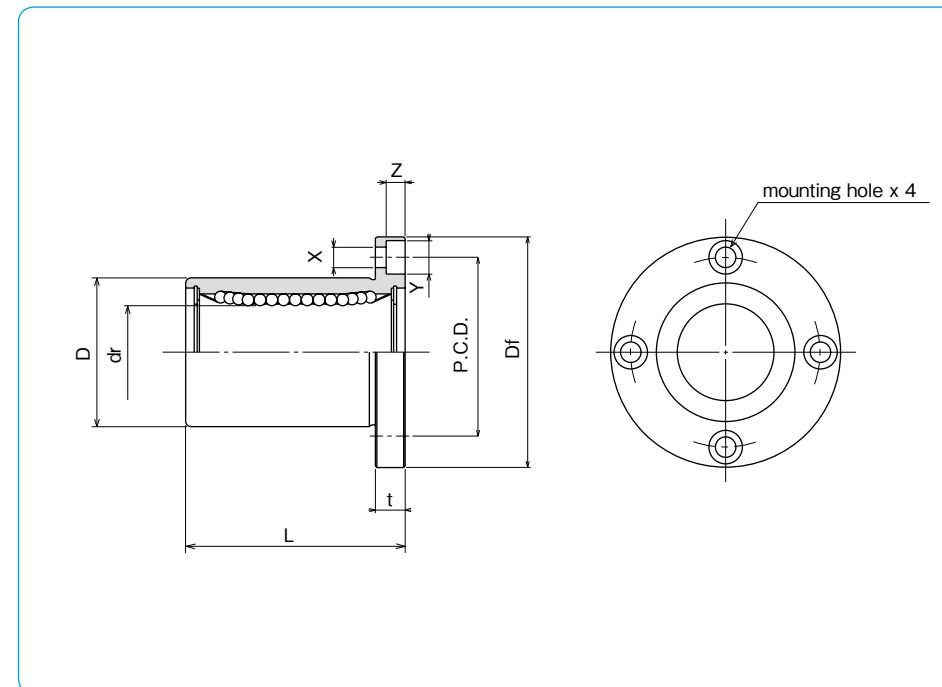
retainer material
blank: standard/steel
 anti-corrosion/stainless steel
G: resin

outer cylinder surface treatment
blank: no surface treatment
SK: electroless nickel plating
LF: low temperature black chrome treatment with fluoride coating
SB: black oxide (not available on anti-corrosion type)
SC: industrial chrome plating

seal
blank: without seal
UU: seals on both sides
ZZ: doublelip-seals on both sides

Doublelip-seal is available for size 6 to 30.

part number				number of ball circuits	major dimensions				
standard steel retainer	anti-corrosion resin retainer	stainless steel retainer	resin retainer		dr mm	D mm	L mm	t mm	X mm
SMF 6	SMF 6G	SMSF 6	SMSF 6G	4	6	12	19	0	12
SMF 8s	SMF 8sG	SMSF 8s	SMSF 8sG	4	8	15	17	-13	15
SMF 8	SMF 8G	SMSF 8	SMSF 8G	4	8	15	24	0	15
SMF 10	SMF10G	SMSF10	SMSF10G	4	10	19	29	-16	19
SMF 12	SMF12G	SMSF12	SMSF12G	4	12	21	30	0	21
SMF 13	SMF13G	SMSF13	SMSF13G	4	13	23	32	-19	23
SMF 16	SMF16G	SMSF16	SMSF16G	4	16	28	37	0	28
SMF 20	SMF20G	SMSF20	SMSF20G	5	20	32	42	-22	32
SMF 25	SMF25G	SMSF25	SMSF25G	6	25	40	59	0	40
SMF 30	SMF30G	SMSF30	SMSF30G	6	30	45	64	-12	45
SMF 35	SMF35G	SMSF35	SMSF35G	6	35	52	70	0	52
SMF 40	SMF40G	SMSF40	SMSF40G	6	40	60	80	-25	60
SMF 50	SMF50G	SMSF50	SMSF50G	6	50	80	100	0	80
SMF 60	SMF60G	SMSF60	SMSF60G	6	60	90	110	-15	90
SMF 80	-	-	-	6	80	120	140	0/-20	120
SMF100	-	-	-	6	100	150	175	0/-29	150



Df mm	t mm	flange P.C.D. mm	X×Y×Z mm	eccentricity μm	perpendicularity μm	basic load rating		mass g	shaft diameter mm
						dynamic C N	static Co N		
28	5	20	3.5×6×3.1	12	12	206	265	24	6
32	5	24	3.5×6×3.1			176	216	32	8
32	5	24	3.5×6×3.1			274	392	37	8
40	6	29	4.5×7.5×4.1			372	549	72	10
42	6	32	4.5×7.5×4.1			510	784	76	12
43	6	33	4.5×7.5×4.1			510	784	88	13
48	6	38	4.5×7.5×4.1	15	15	774	1,180	120	16
54	8	43	5.5×9×5.1			882	1,370	180	20
62	8	51	5.5×9×5.1			980	1,570	340	25
74	10	60	6.6×11×6.1			1,570	2,740	470	30
82	10	67	6.6×11×6.1			1,670	3,140	650	35
96	13	78	9×14×8.1			2,160	4,020	1,060	40
116	13	98	9×14×8.1	20	20	3,820	7,940	2,200	50
134	18	112	11×17×11.1			4,700	10,000	3,000	60
164	18	142	11×17×11.1			7,350	16,000	5,800	80
200	20	175	14×20×13.1			14,100	34,800	10,600	100

1N≒0.102kgf