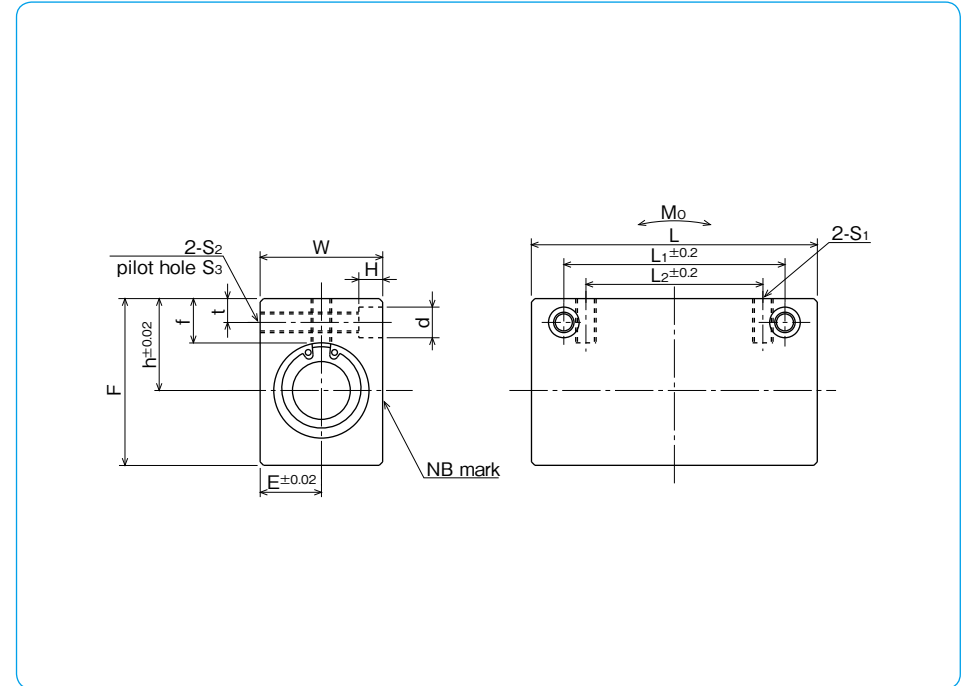
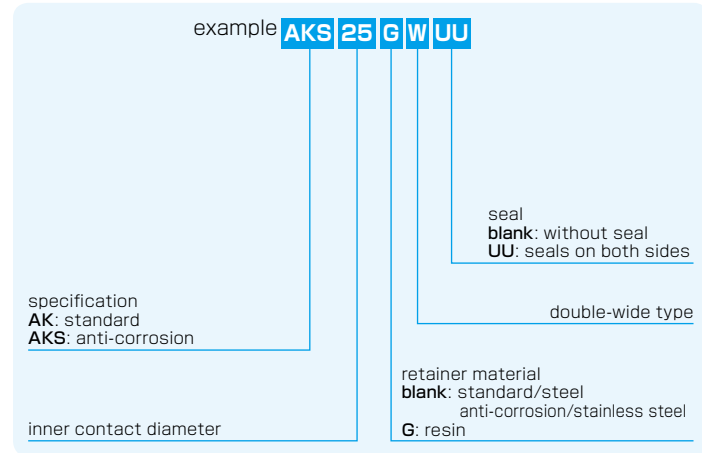


AK-W TYPE

– Double-Wide Compact Block Type –



part number structure



part number	inner contact diameter		outer dimensions				major dimensions		
	mm	tolerance μm	h mm	E mm	W mm	F mm	L mm	L ₂ mm	S ₁
AK 6GWUU	6	0 - 9	14	8	16	22	46	20	M4
AK 8GWUU	8		16	10	20	26	56	30	M5
AK10GWUU	10		19	13	26	32	68	36	M6
AK12GWUU	12		20	14	28	34	70	36	M6
AK13GWUU	13		25	15	30	43	74	42	M6
AK16GWUU	16		27	18	36	49	84	52	M6
AK20GWUU	20	0 -10	31	21	42	54	94	58	M8
AK25GWUU	25		37	26	52	65	128	80	M10
AK30GWUU	30		40	29	58	71	138	90	M10

f mm	mounting dimensions				d mm	H mm	basic load rating		allowable static moment Mo N·m	** mass g	shaft diameter mm
	L ₁ mm	t mm	S ₂	S ₃ mm			dynamic C N	static Co N			
8	30	5	M4	3.5	6	5	323	530	2.18	40	6
8.5	42	5	M4	3.5	6	5	431	784	4.31	75	8
9.5	50	6	M5	4.5	8	6	588	1,100	7.24	150	10
9.5	50	6	M5	4.5	8	6	813	1,570	10.9	168	12
13.5	55	7	M6	5.2	9	7	813	1,570	11.6	248	13
13	65	7	M6	5.2	9	7	1,230	2,350	19.7	383	16
15	70	8	M8	7	11	8	1,400	2,740	26.8	520	20
17	100	9	M10	8.9	14	10	1,560	3,140	43.4	1,120	25
17.5	110	9	M10	8.9	14	10	2,490	5,490	82.8	1,384	30

* Mass of resin retainer type

1N ≙ 0.102kgf 1N · m ≙ 0.102kgf · m