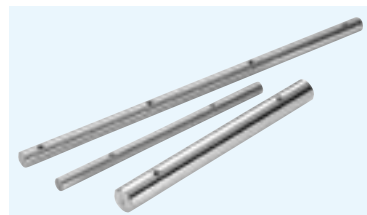


SFW-PD

– NBCA Inch Pre-Drilled Shaft –



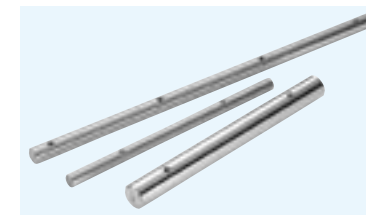
part number structure

example **SFW 24 x 72 - PD**

SFW type size pre-drilled shaft length (L in inches)

SFWS-PD

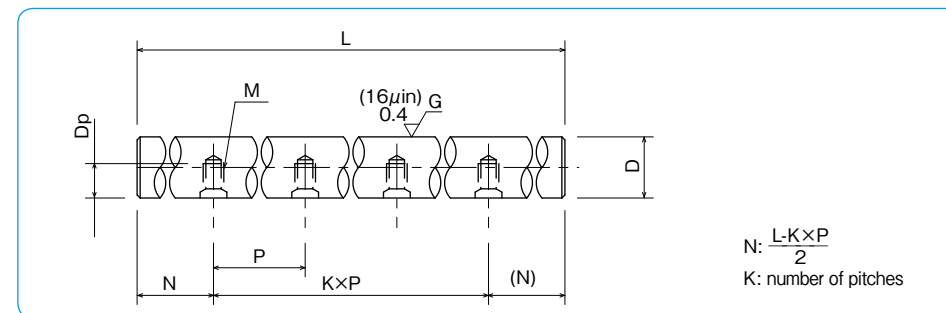
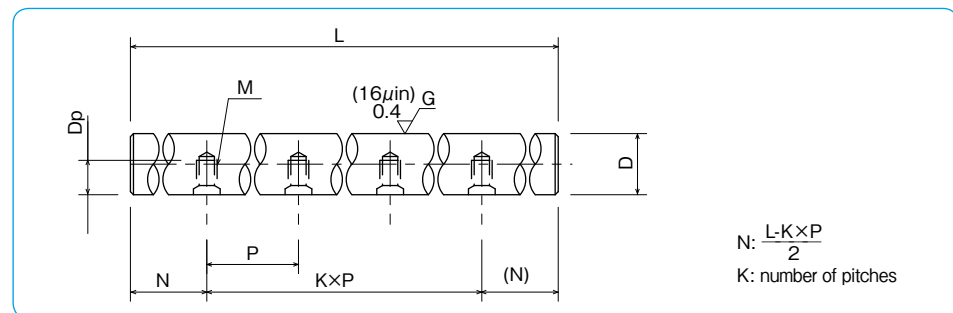
– NBCA Inch Pre-Drilled Stainless Steel Shaft –



part number structure

example **SFWS 24 x 72 - PD**

SFWS type size pre-drilled shaft length (L in inches)



Part Number	Outer Diameter		Pitch P inch/mm	Bolt Size M	Tapped Hole Depth Dp inch/mm	Maximum Length L inch/mm
	D inch/mm	inch/mm				
SFW 8-PD	1/2	-.0005	4	# 6-32	0.280 7.1	168 4267.2
	12.700	-.0010				
SFW 10-PD	5/8	-13	101.6	# 8-32	0.350 8.9	180 4572
	15.875	-25				
SFW 12-PD	3/4	-.0005	6	# 10-32	0.400 10.2	204 5181.6
	19.050					
SFW 16-PD	1	-13	152.4	1/4-20	0.500 12.7	204 5181.6
	25.400	-25				
SFW 20-PD	1-1/4	-.0005	8	5/16-18	0.650 16.5	204 5181.6
	31.750					
SFW 24-PD	1-1/2	-13	203.2	3/8-16	0.700 17.8	204 5181.6
	38.100	-25				
SFW 32-PD	2	-.0005	8	1/2-13	0.850 21.6	204 5181.6
	50.800					

material: Equivalent to SUJ2
 hardness: 60 HRC or more
 Product of NB Corporation of America
 1kg≒2.205lbs

Part Number	Outer Diameter		Pitch P inch/mm	Bolt Size M	Tapped Hole Depth Dp inch/mm	Maximum Length L inch/mm
	D inch/mm	inch/mm				
SFWS 8-PD	1/2	-.0005	4	# 6-32	0.280 7.1	158 4013.2
	12.700	-.0010				
SFWS 10-PD	5/8	-13	101.6	# 8-32	0.350 8.9	158 4013.2
	15.875	-25				
SFWS 12-PD	3/4	-.0005	6	# 10-32	0.400 10.2	158 4013.2
	19.050					
SFWS 16-PD	1	-13	152.4	1/4-20	0.500 12.7	158 4013.2
	25.400	-25				
SFWS 20-PD	1-1/4	-.0005	8	5/16-18	0.650 16.5	158 4013.2
	31.750					
SFWS 24-PD	1-1/2	-13	203.2	3/8-16	0.700 17.8	158 4013.2
	38.100	-25				
SFWS 32-PD	2	-.0005	8	1/2-13	0.850 21.6	158 4013.2
	50.800					

material: Equivalent to SUS440C
 hardness: 52 HRC or more
 Product of NB Corporation of America
 1kg≒2.205lbs